



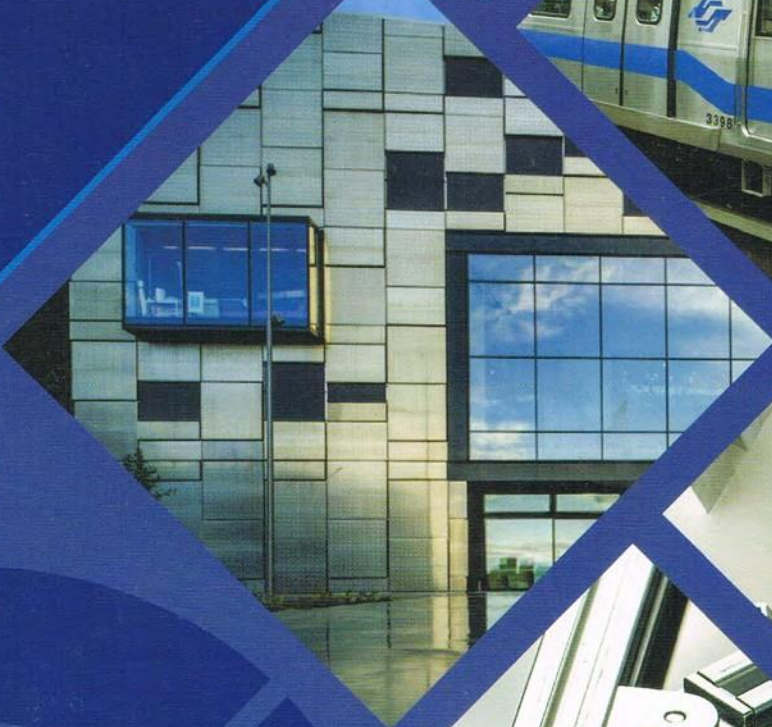
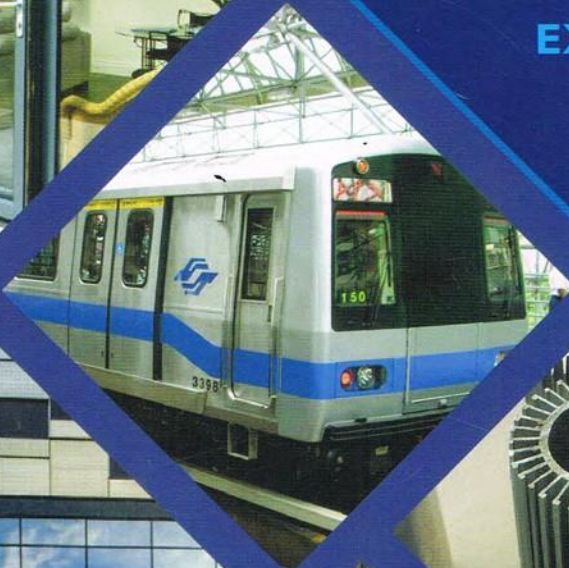
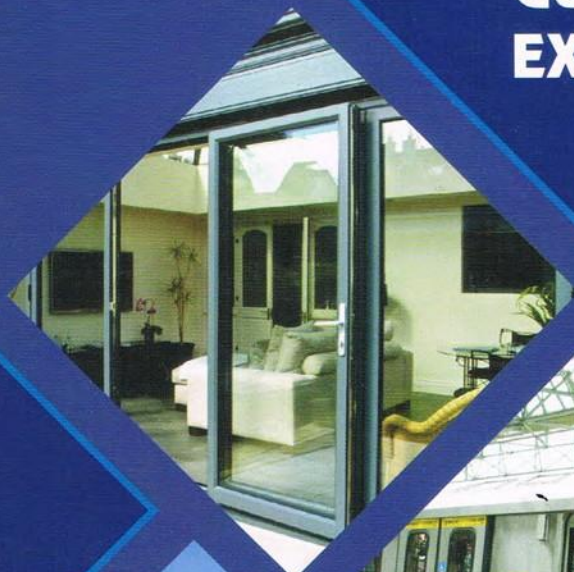
Cert No. 4302



# GUJARAT ALUMINIUM EXTRUSIONS PVT. LTD.

Estd. 1973

**MANUFACTURERS  
OF ALUMINIUM  
EXTRUSIONS**



**POWDER COATING, ANODISING FACILITY AVAILABLE**



# INTRODUCTION

Established in 1973, we are one of the oldest Manufacturers of Aluminium Extrusions in India.

Strategically located in Baroda, Gujarat which is the hub of Extrusion Industry in India.

At GAEPL we lay emphasis on offering outstanding products to our customers and strive hard to deliver products within the stipulated time.

Trained staff with technical expertise acquired with over 35 years of service in the Extrusion Industry. Our dedicated workforce has enabled us to develop a niche of our own. The superior quality of our products and pro-active services have enabled us to consolidate the trust of our loyal clients.

We owe our success to our technical excellence, cutting edge technology, pro-active services and quality control engineers. We are capable enough to compete the changing trends of market and come out with excellent and innovative products to meet the exact requirements of our clients at industry leading prices.

State of Art Extrusion Facility spread over 3 acres of land including In-house Die Designing / Manufacturing, DC and HOT-TOP Casting and Fabrication giving a complete solution to our customers.

Our production operations enables us to deliver volume orders within the stipulated time. We keep stringent check at each stage of production to maintain product standards at highest levels.





# QUALITY MEASURES

- Spectrometer - for Testing Alloy as per Customer Specifications.
- BHN Machine & Webster - for hardness Testing.

## CORE COMPETENCIES

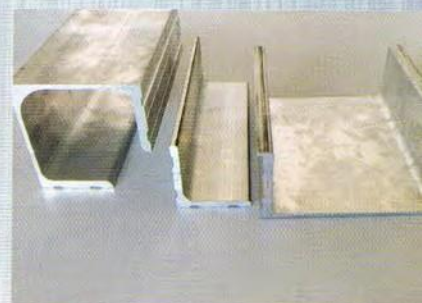
- ISO 9001 : 2000 implementing stringent inspection processes insuring quality extrusions.
- Expert Die Shop - making most intricate and complex profiles.
- HOT-TOP casting giving sound micro structure of Billets resulting in quality extrusions.
- Knowledge and experience of extruding various alloys like 19500 (EC), 63401 (E91), 63400 (6063), 64430(HE30), 53000 (5086, 5083), 2014 and many more.
- Fabrication - making engineering products. Also ability to take up Turn Key Projects for Architects and Builders.
- An educated team of engineers and administrators to understand and translate customer ideas to actual product.
- Loyalty & Commitment to service attaining timely deliveries & short order to delivery schedules.





# PRODUCTS

- Mullion / Transom / Sash
- 1", 3/4", 1/2", 15mm, Window Series/Doors & partition
- Clean Room Profiles
- Aluminium Cheese Tubes (Bobbins)
- Telescopic Tubes (Oval, Square, Round)
- Luggage Frames
- Electrical Trunkings
- Grills, A/C grills
- Photo Frames, Boards, Neon Signs
- Reed Channels
- Textile Frame Sections
- Modular Furniture
- Heat Sinks
- Bus Bars
- Car Carriers, Footsteps
- Ladders
- Solar Sections : Rooftop, Panels & Structure
- Form Structure Sections : Miwan System





# WIN-DEFT SYSTEM - A Touch of Class Apart

## ARCHITECTURAL SOLUTIONS

### » Aluminium Sliding Windows

- 28 mm Series
- 38 mm Series

### » Aluminium Sliding Doors

- 38 mm Series

### » Aluminium Casement Windows

- 45 mm Series
- 55 mm Series

### » Aluminium Doors

- 55 mm Series

### » Aluminium Tilt & Turn Windows

- 45 mm Series
- 55 mm Series

### » Aluminium Glass Railing

- Flush Mount,
- Floor Mount,
- Side Wall Mount

## 28mm & 32mm Sliding Window System

Win-Deft 28mm and 32mm multitrack sliding system with extreme ease of movement of the optimised roller/ rail system enables comfortable and manual movement to span large areas.

## WIN-DEFT SLIDING WINDOW TECHNOLOGY

### TRACK RAIL

Aluminium profile track rail with hard anodised provides smooth movement between rollers and track. It is available in round shape.



### TRACK COVER

Aluminium track cover profile provides covering for screw fixing holes and gives protection to concealed lock receiver with consistency for the setting of the lock.



### CONCEALED LOCK RECEIVER

Concealed lock receiver made of nylon housing with zinc locking nib prevents breaking and provides consistency for the setting of the lock.



### TRACK CORNER CLEAT

Nylon gasket in aluminium profile track corner cleat prevents the penetration of water from fixing screw holes.



### SASH INTERLOCK GASKET

EPDM gasket prevents collision of noise and gives uniform look by covering the screw holes with EPDM cover.



### SASH INTERLOCK WITH HANDLE

Aluminium interlock handle profile design increases the wind load capacity.





# CLEAN ROOM DIVISION

## Modular Clean Room

At GAEPL the modular Clean Room system panels are manufactured with factory-controlled procedures incorporating design criteria for system performance following good engineering practices, taking into account cGMP guidelines required for specialty clean room environments. The product and service are tailored to the specific demands of client's environmental requirements within budgets and time schedules.

GAEPL offers a wide range of Modular Clean rooms for industries like Pharmaceuticals, Life science, Biotech, Hospitals, API, Chemical, Food Processing, Dairy and Electrical & Electronics. Which are predominantly dependent on accuracy in design as well as project executions.

GAEPL is having state of art facility for Modular Clean room product manufacturing.

- ✓ Modular wall partition systems
- ✓ Modular ceiling system
- ✓ Fully flush door system
- ✓ Fully flush view panel
- ✓ Pass through system
- ✓ Fully flush clean room accessories
- ✓ Clean room flooring system

## Modular Clean Room Panels Features:

- ❖ Flush surfaces for easy cleaning and for complying with cGMP requirements
- ❖ Practically no maintenance
- ❖ Good stability due to advanced architectural design
- ❖ Attractive appearance
- ❖ Custom designed solutions from a single room to complete departments
- ❖ Full modularity.
- ❖ Easy to assemble and dismantle.

## Material of Construction:

- ❖ High pressure laminate
- ❖ Powder coated/Pre-Painted
- ❖ Stainless Steel

## Infill Material: PUF/EPS/Rockwool

## Modular Panel available thickness: 50, 60, 80, 100, 125, 150mm

Clean room Panels with all accessories that supports your clean room by providing control over contamination, static, micro-organisms, humidity and other critical operating conditions.

Our accessories include Aluminium Powder Coated / Anodized Covings, PVC Covings, 90° and 180° bends and room corner pieces etc., which are designed with the cGMP guidelines.





## Clean Room Ceiling

Our state-of-the-art systems help tight-tolerance temperature and humidity-controlled environments conform to the latest standards. After ceiling blanks, light fixtures, and filters are installed in the grid, a secure, airtight barrier is formed against dust and moisture for sensitive clean room needs.

Ceiling grid combines flexibility with simplicity to meet the ever-changing needs of the technology industries. This grid system offers the complete versatility of non-progressive construction required in most clean rooms. It is a functional stick-built system that provides a structural grid system with aluminium extrusions and zinc die castings to receive standard filter modules, light fixtures and blank ceiling tiles. Truly an engineered system for ease of installation.

Our Heavy-Duty, Walkable, and Gel Seal Style suspension hardware is interchangeable, providing easy adjustment for installing the ceiling dead level.

**Cleanroom Light Fixtures** are sealed fixtures made especially for cleanrooms. Our lights allow re-lamping and ballast removal from BOTTOM / TOP without contaminating clean areas.

Pharma System cleanroom ceiling panels create a flush ceiling system that provides end users and owners with the ability to utilize the area above the cleanroom for mechanical services or walk-on capabilities for maintenance access when applicable.

**Modular Ceiling Panel available thickness: 35,50, 60 mm.**





## **Modular Clean Room Doors**

GAEPL manufactures different types of doors which are suitable for various industries like pharmaceuticals (Clean Room), Operation Theatre, Movie Theatres, Cold Storage, Chemical Industries and many more. Modular Clean Room Doors Systems satisfy the most stringent requirements for environmental controls while satisfying FDA standards.

All doors should open in / out to the room with the higher pressure. Double-leafed doors are notorious for causing the pressure differential balancing of rooms to drift off as the door springs gradually weaken and the doors leak air between rooms at levels outside of the design parameters.

The Clean Room Doors offered by us are highly durable. These doors are available in custom and standard models. Our clean room doors available in different models as per client specifications and requirements.

### **Material of Construction:**

GI powder coated Metal Doors  
Stainless Steel (SS) Doors  
High Pressure laminated Doors  
Fire Proof Doors.

### **USP:**

Highly durable and smooth functioning.

Attractive designer outlook.

Easily cleanable.

Safety assured.

Doors hardware from reputed brand companies.

Compatible with Door Interlocking systems.

Available in Standard and custom made.

Single leaf and double leaf frames.

Removable over panels.

Finishing in primer or epoxy polyester powder paint.





## Clean Room Flooring

GAEPL applies different types of flooring like Epoxy, PU etc in various thickness 3mm,5mm, 8mm. These floorings are very durable are perfectly suitable to maintain a clean room. Industrial, Epoxy and PU flooring are technical floors which resists to chemicals, mechanical and stress factors. The great advantage is that they are hygienic and easy to clean.

### **USP:**

Resistant to chemicals & stress factors

Easy to clean and Highly hygienic

Lowest Life cycle cost

Low slippage

Seamless and non-porous





## INDUSTRIES SERVED

- Building & Construction
- Architectural & Structural Glazing
- Curtain Walling
- Electrical & Transmission
- Luggage
- Transport (Automobile, Bus & Railways)
- Neon Sign & Display
- Textiles
- Pharmaceuticals
- Furniture
- Defence
- Radiator
- Solar Energy
- Tubes & Pipes



## GUJARAT ALUMINIUM EXTRUSIONS PVT. LTD.

Estd. 1973

### MANUFACTURERS OF ALUMINIUM EXTRUSIONS

#### Factory & Office :

82, G.I.D.C., Makarpura Indl. Estate, Vadodara - 390 010, Gujarat. INDIA

Tel. : 091 - 265 - 6585800

Mobile : 093282 55896

E-mail : [galexpl@hotmail.com](mailto:galexpl@hotmail.com)

Web. : [www.gujarataluminium.co.in](http://www.gujarataluminium.co.in)

#### Mumbai Office :

Tel. : 091 - 22 - 66363340 / 23869007

Mobile : 093243 51265